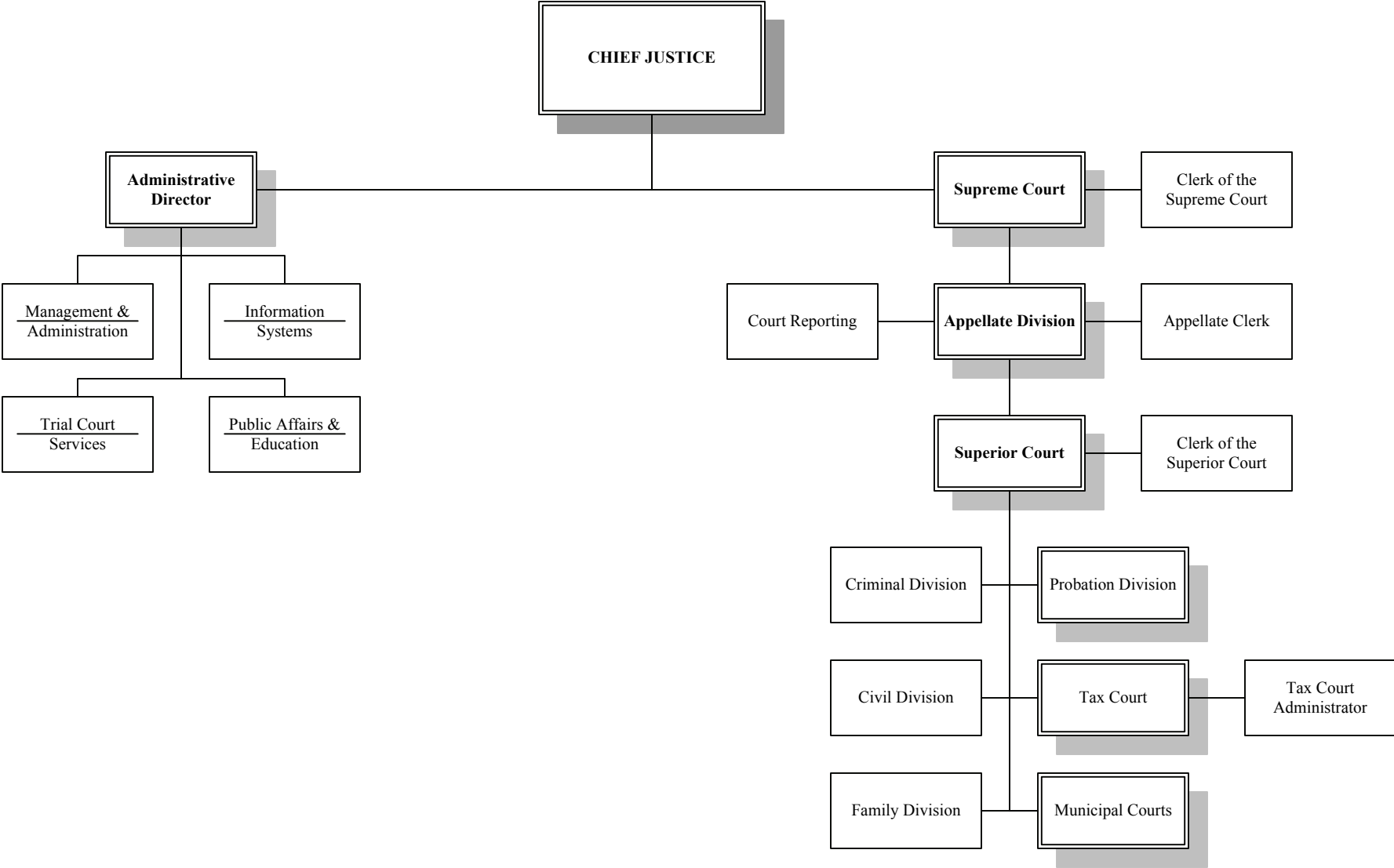


THE JUDICIARY



SUMMARY OF APPROPRIATIONS BY PROGRAM
(thousands of dollars)

Year Ending June 30, 2006					Year Ending June 30, 2008			
Orig. & (S) Supplemental	Reapp. & (R) Recpts.	Transfers & (E) Emergencies	Total Available	Expended	2007 Adjusted Approp.	Requested	Recommended	
DIRECT STATE SERVICES - GENERAL FUND								
Judicial Services								
5,466	---	-480	4,986	4,986	Supreme Court	6,192	6,192	6,192
19,205	---	-1,380	17,825	17,825	Superior Court-Appellate Division	20,633	20,633	20,633
92,483	8,913	-3,116	98,280	94,375	Civil Courts	99,100	99,100	99,100
109,776	---	-17,377	92,399	88,192	Criminal Courts	115,861	115,861	115,861
95,965	---	2,695	98,660	98,657	Family Courts	105,619	105,619	105,619
1,075	---	-12	1,063	1,062	Municipal Courts	1,344	1,344	1,344
119,347	458	-1,174	118,631	118,630	Probation Services	128,503	128,503	128,503
7,849	---	-587	7,262	7,262	Court Reporting	8,598	8,598	8,598
2,618	---	59	2,677	2,677	Public Affairs and Education	2,862	2,862	2,862
16,353	16	19,601	35,970	35,969	Information Services	20,572	17,572	17,572
70,812	3,000	2,657	76,469	73,462	Trial Court Services	77,165	77,165	77,165
13,077	---	433	13,510	13,510	Management and Administration	10,949	10,949	10,949
554,026	12,387	1,319	567,732	556,607	<i>Subtotal</i>	597,398	594,398	594,398
554,026	12,387	1,319	567,732	556,607	<i>Total Direct State Services - General Fund</i>	597,398	594,398	594,398
554,026	12,387	1,319	567,732	556,607	TOTAL DIRECT STATE SERVICES	597,398	594,398	594,398
554,026	12,387	1,319	567,732	556,607	<i>Total Appropriation, The Judiciary</i>	597,398	594,398	594,398

10. PUBLIC SAFETY AND CRIMINAL JUSTICE
15. JUDICIAL SERVICES

OBJECTIVES

- To determine in a fair and expeditious manner the cases of all kinds which are brought to court.
- To assist the Chief Justice of the Supreme Court in carrying out the constitutional responsibility vested in that office as the administrative head of the entire New Jersey court system.
- To provide the services and direct support necessary for the effective operation of the Judicial system throughout the State.

PROGRAM CLASSIFICATIONS

01. **Supreme Court.** The State Supreme Court consists of the Chief Justice and six Associate Justices, appointed by the Governor with the advice and consent of the Senate, and is the State court of final appeal. Pursuant to Article VI, Section V of the New Jersey Constitution, appeals may be taken to the Supreme Court in causes determined by the Appellate Division of the Superior Court involving a question arising under the Constitution of the United States or of this State; in causes in which there is a dissent in the Appellate Division of the Superior Court; in capital causes; on certification by the Supreme Court itself to the Superior Court and where provided by rules of the Supreme Court, to the inferior courts; and in such other causes as may be provided by law.

Pursuant to Article VI, Section II of the Constitution, the Supreme Court makes rules governing the administration of the courts in the State. The Supreme Court also administers programs that are wholly or partially reimbursable by special

fees, such as the New Jersey Lawyers' Fund for Client Protection, Attorney Discipline, Trial Attorney Certification, and the Bar Admissions Financial Committee.

- Superior Court, Appellate Division.** The Superior Court, pursuant to Article VI, Section III of the Constitution, includes an Appellate Division. The Appellate Division hears appeals from the Law and Chancery Divisions of the Superior Court, the Tax Court, and State administrative agencies.
- Civil Courts.** The Civil Courts include the Civil Part of the Law Division of Superior Court, the General Equity Part of the Chancery Division, and the Tax Court.

The Tax Court is a special category within Civil Courts. Pursuant to N.J.S.A. 2A:4A, it has jurisdiction to hear tax appeals of taxpayers and taxing districts with regard to assessment, railroad assessments levied by the State, sales taxes, franchise taxes, gross receipts, and all other taxes levied by the State. The Court also hears appeals on homestead rebate denials issued by the Director of the Division of Taxation and appeals by taxing districts from both the equalization tables promulgated by the Director of the Division of Taxation for the distribution of school aid and the equalization tables promulgated by the various counties for the purpose of distributing costs of county government.

- Criminal Courts.** The Criminal Part of the Law Division of the Superior Court hears and determines all serious criminal cases following grand jury indictment. It also hears appeals from Municipal Courts.

JUDICIARY

05. **Family Courts.** The Family Courts hear and determine all causes involving the family including those causes previously heard by the Matrimonial Part of the Superior Court and the Juvenile and Domestic Relations Courts.
06. **Municipal Courts.** The municipal courts are funded directly by the municipalities, but the State supports a unit within the Administrative Office of the Courts to train municipal court judges and clerks, promulgate manuals of procedures, collect data on municipal court operations, conduct studies for the improvement of municipal courts, works with other State agencies on matters involving the municipal courts, and also administers the Automated Traffic System, a program which is wholly reimbursable by special fees.
07. **Probation Services.** Probation Services supervises probation operations statewide, establishes and monitors standards, conducts research and field review of probation programs, coordinates community services programs and operates the Intensive Supervision Program. Additionally, it oversees both the collections of all court imposed financial obligations and the Child Support Enforcement operations statewide.
08. **Court Reporting.** Court proceedings are recorded verbatim either by court reporters or by sound recordings, as provided by Supreme Court rules.
09. **Public Affairs and Education.** Responsibilities of the units within this program, formerly known as Legal and Professional Services, include coordination and/or provision of legislative liaison services, research and analysis, and coordination of the Judicial Performance Program, Media/Public Information.
10. **Information Services.** The Administrative Office of the Courts is responsible for the collection and maintenance of data on court operations, including statistical analysis and reporting, records management, and management information systems.
11. **Trial Court Services.** This program classification, formerly known as Field Operations, includes the Division of Trial Court Support Operations, which provides technical assistance to the statewide trial level courts in areas such as case management, management structure, Interpreter and Translation Services, and coordination of Volunteer Services.
In the Trial Courts, this program classification includes Trial Court Administrators who serve as the administrative arm for the Assignment Judge, as well as the vicinage finance, accounting, purchasing and human resources functions.
12. **Management and Administration.** Provides overhead services in such areas as budgeting and accounting, purchasing, property maintenance, and personnel.

EVALUATION DATA

	Actual FY 2005	Actual FY 2006	Revised FY 2007	Budget Estimate FY 2008
PROGRAM DATA				
Supreme Court				
Court Year--July 1 to June 30				
Appeals				
Added	175	254	250	220
Disposed	168	251	250	220
Pending	114	117	117	117
Certifications added	1,362	1,282	1,350	1,375
Motions added	1,630	1,648	1,650	1,675
Disciplinary proceedings added	218	240	125	130
Superior Court-Appellate Division				
Appeals				
Added	7,450	7,450	7,100	7,100
Disposed	7,350	7,350	6,900	7,100
Pending June 30	5,885	5,895	6,250	6,300
Motions added	7,000	7,000	7,000	7,000
Civil Courts				
Civil Cases				
Added	99,706	104,022	105,062	106,113
Resolved	106,982	99,445	100,439	101,444
Pending	90,994	95,999	100,622	105,291
Special Civil				
Added	466,274	502,199	522,287	543,178
Resolved	467,247	507,785	528,096	549,220
Pending	46,665	43,239	37,430	31,388
Probate				
Added	10,488	10,018	9,717	9,425
Resolved	10,462	9,960	9,661	9,370
Pending	1,556	1,629	1,685	1,740
General Equity				
Added	5,154	5,201	5,253	5,306
Disposed	5,460	5,105	5,156	5,208
Pending	2,298	2,463	2,560	2,658

	Actual FY 2005	Actual FY 2006	Revised FY 2007	Budget Estimate FY 2008
Automobile Arbitration (a)				
Cases scheduled	26,119	28,702	28,702	28,702
Cases removed	158	168	168	168
Cases settled prior to hearing	3,470	3,666	3,666	3,666
Cases arbitrated	11,251	12,831	12,831	12,831
Trial de novo requests	8,635	9,822	9,822	9,822
Trials de novo completed	681	854	854	854
Personal Injury Arbitration (a)				
Cases scheduled	14,238	15,649	15,649	15,649
Cases removed	94	129	129	129
Cases settled prior to hearing	1,694	1,847	1,847	1,847
Cases arbitrated	5,601	6,467	6,467	6,467
Trial de novo requests	4,000	4,542	4,542	4,542
Trials de novo completed	262	282	282	282
Other Civil Arbitration (a)				
Cases Scheduled	6,361 ^(b)	4,994	4,994	4,994
Presumptive Mediation (a)				
Cases Referred	6,936	7,322	7,322	7,322
Cases Settled Prior to Hearing	150	132	132	132
Completed Mediation	4,280	4,210	4,210	4,210
Agreement Reached	1,303	1,306	1,306	1,306
Partial Agreement	112	93	93	93
No Agreement	2,865	2,811	2,811	2,811
Tax Court				
Local & State Appeals				
Added	7,332	8,205	9,205	10,205
Closed	6,719	7,533	8,533	9,533
Pending	12,282	13,120	14,120	15,220
Criminal Courts				
Criminal Post-Indictment				
Added	53,762	54,671	55,218	55,770
Resolved	56,722	55,960	56,520	57,085
Pending June 30	13,752	14,377	13,726	13,069
Municipal Appeals				
Added	1,487	1,402	1,402	1,402
Resolved	1,517	1,420	1,420	1,420
Pending June 30	514	496	478	460
Post-Conviction Relief				
Added	619	762	815	872
Resolved	502	738	789	845
Pending June 30	845	856	882	909
Drug Court Program				
Current Active Cases	2,200	2,498	3,250	3,906
Number of Graduates	393	591	757	1,144
Family Courts				
Dissolution				
Added	64,252	66,059	67,380	68,728
Resolved	64,314	66,352	67,679	69,033
Pending June 30	17,698	17,368	17,069	16,764
Juvenile Delinquency				
Added	72,926	66,365	63,710	61,162
Resolved	73,123	66,061	63,418	60,882
Pending June 30	5,119	5,394	5,686	5,966
Non-Dissolution				
Added	156,290	158,544	158,544	158,544
Resolved	155,630	158,402	158,402	158,402
Pending June 30	11,006	10,985	11,127	11,269
Domestic Violence				
Added	58,924	59,639	59,639	59,639
Resolved	59,006	59,670	59,670	59,670
Pending June 30	1,475	1,475	1,444	1,413

JUDICIARY

	Actual FY 2005	Actual FY 2006	Revised FY 2007	Budget Estimate FY 2008
Abuse/Neglect Complaints				
Added	4,021	4,728	5,012	5,313
Resolved	3,935	4,085	4,905	5,199
Pending June 30	4,612	5,261	5,368	5,482
Adoption Complaints				
Added	2,557	2,398	2,398	2,398
Resolved	2,722	2,409	2,409	2,409
Pending June 30	531	516	505	494
Child Placement Review				
Added	5,855	6,181	6,366	6,557
Resolved	7,271	6,863	7,068	7,280
Pending June 30	11,854	11,231	10,529	9,806
Juvenile/Family Crisis Petition				
Added	1,088	915	842	775
Resolved	1,111	933	842	775
Pending June 30	39	21	21	21
Kinship Legal Guardian (KLG)				
Added	1,311	1,454	1,599	1,759
Resolved	1,285	1,474	1,599	1,759
Pending June 30	228	211	211	211
Termination of Parental Rights Complaints				
Added	1,095	1,029	1,039	1,029
Resolved	1,237	1,070	1,080	1,070
Pending June 30	580	540	499	458
Criminal/Quasi-Criminal				
Added	11,499	10,812	10,488	10,173
Resolved	11,436	10,842	10,517	10,201
Pending June 30	792	772	743	715
Combined Trial Courts				
Added	1,017,308	1,056,399	1,076,771	1,098,143
Resolved	1,029,962	1,058,574	1,079,670	1,101,272
Pending June 30	210,558	212,833	210,585	208,114
Volunteer Services				
Number of Volunteers	5,990	5,120	5,600	6,100
Number of Volunteer Hours Served	359,400	307,200	336,000	366,000
Municipal Courts				
Non-Traffic Violations				
Indictables	204,304	205,373	206,448	207,528
Disorderly Person	385,133	390,872	396,697	402,608
Other Non-Traffic	227,259	244,376	262,782	282,575
Traffic Violations				
Drunk Driving	36,750	36,705	36,660	36,615
Moving Violations	2,532,300	2,655,019	2,783,685	2,918,587
Parking	2,914,436	2,888,956	2,863,699	2,838,662
Total	6,300,182	6,421,301	6,549,971	6,686,575
Probation Services				
Adult Supervision Clients (c)	65,852	60,510	61,902	63,325
Juvenile Supervision Clients (c)	14,336	11,938	12,129	12,323
Core Services Clients	63,046	58,971	60,496	62,250
Intensive Supervision Program (ISP)				
Participants	1,265	1,224	1,247	1,247
Applications (c)	3,580	3,515	3,538	3,538
Assessment Reports (c)	2,481	2,541	2,598	2,598
Resentencing Panel Hearings (c)	5,064	4,876	4,979	4,979
Revocations (c)	485	434	429	429
Juvenile Intensive Supervision Program (JISP)				
Participants	284	310	325	325
Applications	275	262	300	300
Assessment Reports	275	262	300	300
Revocations	63	71	81	81

	Actual FY 2005	Actual FY 2006	Revised FY 2007	Budget Estimate FY 2008
Child Support & Paternity - Title IV-D				
Child Support Cases	305,126	310,554	314,591	318,681
Collections	\$1,014,907,355	\$1,070,679,867	\$1,134,920,659	\$1,203,015,899

PERSONNEL DATA

Affirmative Action Data

Male Minority	599	599	624	624
Male Minority %	6.4	6.3	6.8	6.8
Female Minority	2,694	2,772	2,801	2,801
Female Minority %	28.7	29.2	30.2	30.2
Total Minority	3,293	3,371	3,425	3,425
Total Minority %	35.1	35.5	37.0	37.0

Position Data

Filled Positions by Funding Source

State Supported	7,877	8,008	7,936	8,099
Federal	1,265	1,279	1,283	1,334
All Other	229	259	259	288
Total Positions	9,371	9,546	9,478	9,721

Filled Positions by Program Class

Supreme Court	185	182	180	198
Superior Court-Appellate Division	234	228	234	247
Civil Courts	1,622	1,624	1,589	1,673
Criminal Courts	1,455	1,448	1,451	1,509
Family Courts	1,842	1,931	1,911	1,954
Municipal Courts	58	81	76	84
Probation Services	2,439	2,435	2,413	2,520
Court Reporting	85	84	78	99
Public Affairs and Education	31	31	33	30
Information Services	170	173	187	197
Trial Court Services	1,089	1,157	1,160	1,081
Management and Administration	161	172	166	129
Total Positions	9,371	9,546	9,478	9,721

Notes:

Actual payroll counts are reported for fiscal years 2005 and 2006 as of December and revised fiscal year 2007 as of January.

The Budget Estimate for fiscal year 2008 reflects the number of positions funded. All Other includes positions supported by fees or other dedicated resources previously reported as State Supported.

Revised fiscal year 2006 and 2007 figures and the budget estimate for fiscal year 2008 are based on recounted data. The calculation of pending, plus added, less disposed may not total.

(a) Figures for all Arbitration and Presumptive Mediation cases are the same for fiscal years 2006, 2007, and 2008 due to stable Civil Court caseload levels.

(b) Beginning in fiscal year 2005, certain cases are no longer considered for Civil Arbitration.

(c) For fiscal years 2005 and 2006, data has been revised to reflect more accurate information.

APPROPRIATIONS DATA
(thousands of dollars)

Year Ending June 30, 2006						Year Ending June 30, 2008		
Orig. & (S)Supple- mental	Reapp. & (R)Recpts.	Transfers & (E)Emer- gencies	Total Available	Expended	Prog. Class.	2007 Adjusted Approp.	Requested	Recom- mended
DIRECT STATE SERVICES								
Distribution by Fund and Program								
5,466	---	-480	4,986	4,986	01	6,192	6,192	6,192
19,205	---	-1,380	17,825	17,825	02	20,633	20,633	20,633
92,483	8,913	-3,116	98,280	94,375	03	99,100	99,100	99,100
109,776	---	-17,377	92,399	88,192	04	115,861	115,861	115,861
95,965	---	2,695	98,660	98,657	05	105,619	105,619	105,619

JUDICIARY

Year Ending June 30, 2006					Year Ending June 30, 2008				
Orig. & (S)Supplemental	Reapp. & (R)Recpts.	Transfers & (E)Emergencies	Total Available	Expended	Prog. Class.	2007 Adjusted Approp.	Requested	Recommended	
<u>DIRECT STATE SERVICES</u>									
1,075	---	-12	1,063	1,062	Municipal Courts	06	1,344	1,344	1,344
119,347	458	-1,174	118,631	118,630	Probation Services	07	128,503	128,503	128,503
7,849	---	-587	7,262	7,262	Court Reporting	08	8,598	8,598	8,598
2,618	---	59	2,677	2,677	Public Affairs and Education	09	2,862	2,862	2,862
16,353	16	19,601	35,970	35,969	Information Services	10	20,572	17,572	17,572
70,812	3,000	2,657	76,469	73,462	Trial Court Services	11	77,165	77,165	77,165
13,077	---	433	13,510	13,510	Management and Administration	12	10,949	10,949	10,949
554,026	12,387	1,319	567,732	556,607	Total Direct State Services		597,398^(a)	594,398	594,398
Distribution by Fund and Object									
Personal Services:									
---	---	---	---	164	Chief Justice		164	173	173
---	---	---	---	985	Associate Justices		951	1,005	1,005
---	---	---	---	60,626	Judges		61,295	64,718	64,718
427,183	---	-2,470	424,713	362,938	Salaries and Wages ^(b)		397,557	391,282	391,282
427,183	---	-2,470	424,713	424,713	Total Personal Services		459,967	457,178	457,178
7,755	---	490	8,245	8,243	Materials and Supplies		7,755	7,755	7,755
32,549	3,016	12,123	47,688	44,693	Services Other Than Personal		32,423	32,423	32,423
							3,000 ^S		
1,852	---	-81	1,771	1,769	Maintenance and Fixed Charges		1,852	1,852	1,852
Special Purpose:									
200	---	-11	189	189	Rules Development	01	200	200	200
---	6,197	---	8,913	5,004	Civil Arbitration Program	03	---	---	---
20,618	2,716 ^R	-16,405	4,213	---	Drug Court Treatment/After-care	04	20,618 ^(c)	20,618	20,618
6,780	---	1,046	7,826	7,824	Drug Court Operations ^(d)	04	7,387	10,006	10,006
1,498	---	42	1,540	1,540	Drug Court Judgeships ^(d)	04	1,498	1,612	1,612
---	---	---	---	---	Family Crisis Intervention ^(e)	05	1,076	1,076	1,076
82	---	-1	81	81	Child Placement Review				
					Advisory Council	05	82	82	82
3,311	---	15	3,326	3,325	Kinship Legal Guardianship	05	3,411	3,467	3,467
8,957	---	3,000	11,957	11,957	Child Support and Paternity Program Title IV-D (Family Court)	05	11,993 ^(f)	11,993	11,993
11,380	458 ^R	-66	11,772	11,772	Intensive Supervision Program	07	12,168	12,168	12,168
2,169	---	-17	2,152	2,152	Juvenile Intensive Supervision Program	07	2,219	2,219	2,219
24,919	---	-3,057	21,862	21,862	Child Support and Paternity Program Title IV-D (Probation)	07	24,936 ^(f)	24,936	24,936
---	---	57	57	57	Child Support and Paternity Program Title IV-D (Trial)	11	2,040	2,040	2,040
770	---	-20	750	750	Affirmative Action and Equal Employment Opportunity	12	770	770	770
4,003	---	6,674	10,677	10,676	Additions, Improvements and Equipment		4,003	4,003	4,003
554,026	12,387	1,319	567,732	556,607	Grand Total State Appropriation		597,398	594,398	594,398
OTHER RELATED APPROPRIATIONS									
Federal Funds									
450	---	---	450	---	Criminal Courts	04	---	---	---
19,084	1,033	8,008	28,125	26,722	Family Courts	05	26,822	31,554	31,554
60,545	1,266	-12,482	49,329	45,728	Probation Services	07	53,178	56,399	56,399
---	272	364	636	276	Information Services	10	---	---	---
---	-2	4,435	4,433	4,341	Trial Court Services	11	4,002	4,550	4,550
80,079	2,569	325	82,973	77,067	Total Federal Funds		84,002	92,503	92,503

JUDICIARY

Orig. & (S)Supple- mental	Year Ending June 30, 2006					Prog. Class.	2007 Adjusted Approp.	Year Ending June 30, 2008	
	Reapp. & (R)Recpts.	Transfers & (E)Emer- gencies	Total Available	Expended				Requested	Recom- mended
OTHER RELATED APPROPRIATIONS									
All Other Funds									
---	50 12,202 R	---	12,252	12,252	Supreme Court	01	14,747	16,032	16,032
---	1 2,881 R	---	2,882	2,881	Civil Courts	03	2,206	2,760	2,760
---	146 575 R	---	721	694	Family Courts	05	400	400	400
---	4,628 25,900 R	---	30,528	21,105	Municipal Courts	06	21,006	23,015	23,015
---	2,821 4,297 R	---	7,118	3,704	Probation Services	07	2,900	3,200	3,200
---	2,136 14,894 R	---	17,030	12,593	Information Services	10	13,624	13,816	13,816
---	34 19 R	---	53	50	Trial Court Services	11	---	---	---
---	99	10	109	---	Management and Administra- tion	12	---	---	---
---	<u>70,683</u>	<u>10</u>	<u>70,693</u>	<u>53,279</u>	Total All Other Funds		<u>54,883</u>	<u>59,223</u>	<u>59,223</u>
<u>634,105</u>	<u>85,639</u>	<u>1,654</u>	<u>721,398</u>	<u>686,953</u>	GRAND TOTAL ALL FUNDS		<u>736,283</u>	<u>746,124</u>	<u>746,124</u>

Notes -- Direct State Services - General Fund

- (a) The fiscal year 2007 appropriation has been adjusted for the allocation of salary program.
- (b) Beginning in fiscal year 2008, an amount of \$3,590,000 has been reallocated from various salary accounts to judges salary accounts.
- (c) The appropriation of \$20,618,000 for Drug Court Treatment/Aftercare will be transferred to the Department of Human Services to provide services for the Drug Court Program.
- (d) Beginning in fiscal year 2008, an amount of \$2,685,000 has been reallocated from the Criminal Courts salary account, of which \$2,619,000 is allocated to the Special Purpose Drug Court Operations account and \$66,000 is allocated to the Drug Court Judgeships account.
- (e) Beginning in fiscal year 2007, an amount of \$1,076,000 has been reallocated from Family Courts accounts to the Special Purpose Family Crisis Intervention Program account.
- (f) An amount of \$2,300,000 has been reallocated from various salary accounts to the Child Support and Paternity Program - Title IV-D in Family and Probation Courts.

Language Recommendations -- Direct State Services - General Fund

The unexpended balances at the end of the preceding fiscal year in the Civil Arbitration Program are appropriated subject to the approval of the Director of the Division of Budget and Accounting.

Notwithstanding the provisions of any law or regulation to the contrary, receipts derived from fees under the Special Civil Part service of process via certified mailers are appropriated for the same purpose, subject to the approval of the Director of the Division of Budget and Accounting.

The amounts appropriated hereinabove in the Drug Courts Treatment and Aftercare account shall be transferred to the Department of Human Services to fund treatment, aftercare and administrative services associated with the drug court program, subject to the approval of the Director of the Division of Budget and Accounting.

Receipts derived from the increase in fees collected by the Judiciary pursuant to P.L. 2002, c. 34 and related increases provided by operation of N.J.S.22A:2-5 and section 2 of P.L.1993, c.74 (C.22A:5-1) are appropriated from the Court Technology Improvement Fund for the purpose of offsetting the costs of development, establishment, operation and maintenance of the Judiciary computerized court information systems, subject to the approval of the Director of the Division of Budget and Accounting.

Receipts from charges to certain Special Purpose accounts listed hereinabove are appropriated for services provided to these funds.

Receipts from charges to the Superior Court Trust Fund, NJ Lawyers Fund for Client Protection, Disciplinary Oversight Committee, Board on Attorney Certification, Bar Admission Financial Committee, Parents' Education Fund, Automated Traffic System Fund, Municipal Court Administrator Certification, Comprehensive Enforcement Program, and Courts Computerized Information Systems Fund are appropriated for services provided to these funds.

JUDICIARY

The unexpended balances at the end of the preceding fiscal year not to exceed \$3,000,000 in these respective accounts are appropriated subject to the approval of the Director of the Division of Budget and Accounting.

Notwithstanding the provisions of N.J.S.A. 2B:2-4, or any other law or regulation to the contrary, the amounts appropriated hereinabove for payment of judicial salaries shall be subject to the condition that, for Fiscal Year 2008, the annual salaries provided by law for justices and judges, pursuant to Article VI, Section VI, paragraph 6 of the New Jersey State Constitution, shall be as follows:

Chief Justice of the Supreme Court - \$173,569

Associate Justice of the Supreme Court - \$167,493

Judge of the Superior Court, Appellate Division - \$158,511

Judge of the Superior Court, Assignment Judge - \$155,076

Judge of the Superior Court - \$149,000

Judge of the Tax Court - \$149,000